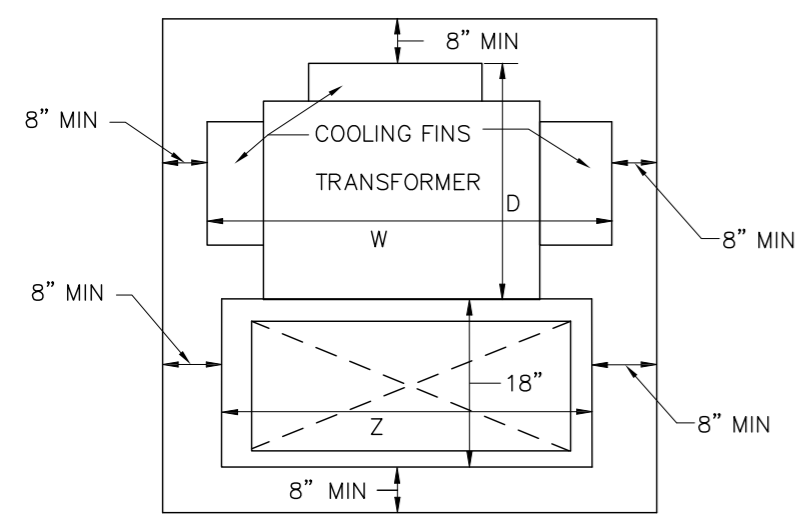
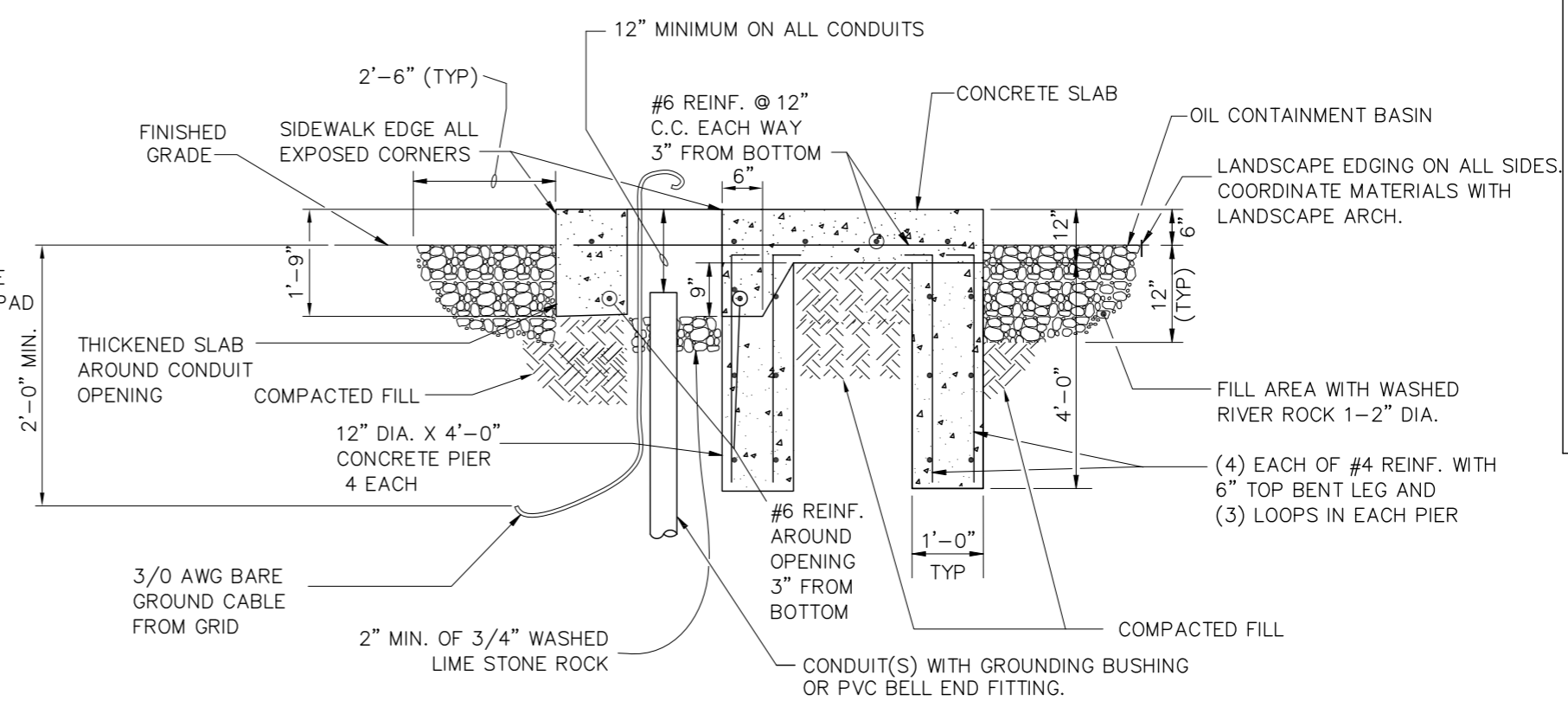


PROVIDE GROUNDING BUSHINGS ON ALL METAL CONDUITS AND BELL END FITTINGS ON ALL PVC CONDUITS.

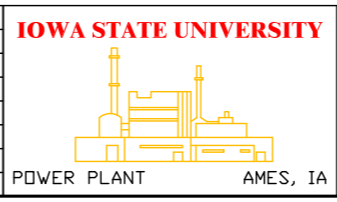


- NOTE 1 TRANSFORMER PAD TO CLEAR ALL TRANSFORMER DIMENSIONS BY 8" MIN.
- NOTE 2 XFMR PAD CUT OUT SHALL BE SMALLER THAN INTERNAL XFMR CONNECTION BOX DIM. BY 2" MAX.
- NOTE 3 ALTERNATE LOCATION OF FRONT PIERS IF CONDUIT LAYOUT INTERFERES WITH PRIMARY LOCATION.
- NOTE 4 IF DISTANCE TO FACE/EDGE OF A BUILDING/SIDWALK/CURB IS LESS THAN 48" THEN EXTEND A 3" THICK LAYER OF RIVER ROCK TO EDGE. CONFIRM WITH ISU.
- NOTE 5 SECONDARY CONDUITS SHALL BE INSTALLED WITHIN A MAXIMUM OF 2" OF RIGHT END OF OPENING. CONDUITS SHALL BE GROUPED TOGETHER, SO ALL WILL ENTER THE SECONDARY COMPARTMENT OF THE TRANSFORMER.

3 Phase Generic Transformer Sizes.
Adjust Size Per Owner Supplied Transformer

KVA	W	D	Z	Gal of Oil
750	81	61	42	270
500	66	59	42	200
300	62	59	42	165
225 or smaller	62	50	42	150

ENGR.: RKL		DATE.: 8/28/2009	
#	Date	Revision	By
SHEET SIZE: 11 X 17		SCALE = NTS	



FACILITIES PLANNING & MANAGEMENT
UTILITY SERVICES

DWG. TITLE: TRANSFORMER PAD DETAIL	
TYPE: SPILL POLLUTION & COUNTER MEASURES (SPCC)	
DWG. NO.: EU-XFMR-PD	REV.: SHEET: 1 OF 1